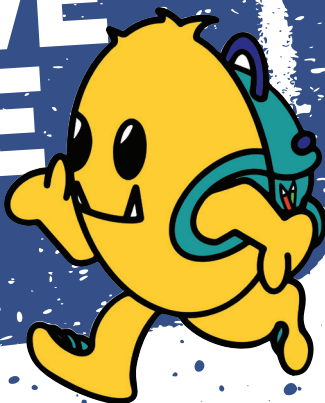




ST JOHN'S GREEN PRIMARY  
SCHOOL'S...

# ACTIVE ZONE MAP



## LET'S GET ACTIVE!

St John's Green Primary School promotes active travel to school because it:



**KEEPS US HEALTHY AND ACTIVE**



**IMPROVES OUR CONCENTRATION**



**MAKES US FEEL CALMER AND HAPPIER**



**KEEPS US SAFE ON THE ROADS  
AROUND OUR SCHOOL**



**CAN SAVE US MONEY**



**HELPS THE ENVIRONMENT  
AND KEEPS THE AIR CLEAN**



Department  
for Environment  
Food & Rural Affairs

CHOOSE how  
You MOVE



Colchester  
City Council

## HOW WE CAN DO IT..

### WALKING

Walking is a great way to get to school! Get some fresh air and chat with family and friends while travelling to school. Check the map on page 2 to see which areas are within a 5 to 10 minute walk.

### CYCLING & SCOOTING

If walking isn't your thing, grab some wheels and cycle or scoot to school! Check the map on page 2 to see which areas are within a 2 to 5 minute cycle.



Always lock up your cycle or scooter to keep it safe while you are at school.

There is **parking** for cycles and scooters at both school sites, **in front of the building at the town site and to the right of the building at the Abbey Field site**, as shown on the map.



Sign up for Bikeability to learn how to cycle safely and confidently on the road.



### BUS

If you live further away, try catching the bus to school! Check out the map to see where the nearest bus stop is and download the Travel Essex App to find out which bus to take.



### PARK & STRIDE

If you are coming to school by car, try parking somewhere in the 5 minute walking zone and walk the rest of the way to school! That way you get to be active and help reduce traffic outside the school, keeping it safer for everyone arriving and leaving.

### PARKING

Keep everyone safe if you drive to school. Follow the 3 parking rules **CARE, CONSIDERATION** and **CAUTION**:

- turn off your engine when waiting
- don't park on the pavement, zig-zag lines or double yellows
- don't block driveways or access on residential roads
- consider picking up friends on the way to save other parents driving as well

Parents are able to park for a **limited time** on Flagstaff Road for Town Site. There is **more parking** available on the edge of Abbey Field which parents from both sites can use.

Use this link/QR code to check for any upcoming road closures or works that might affect your drive to school.

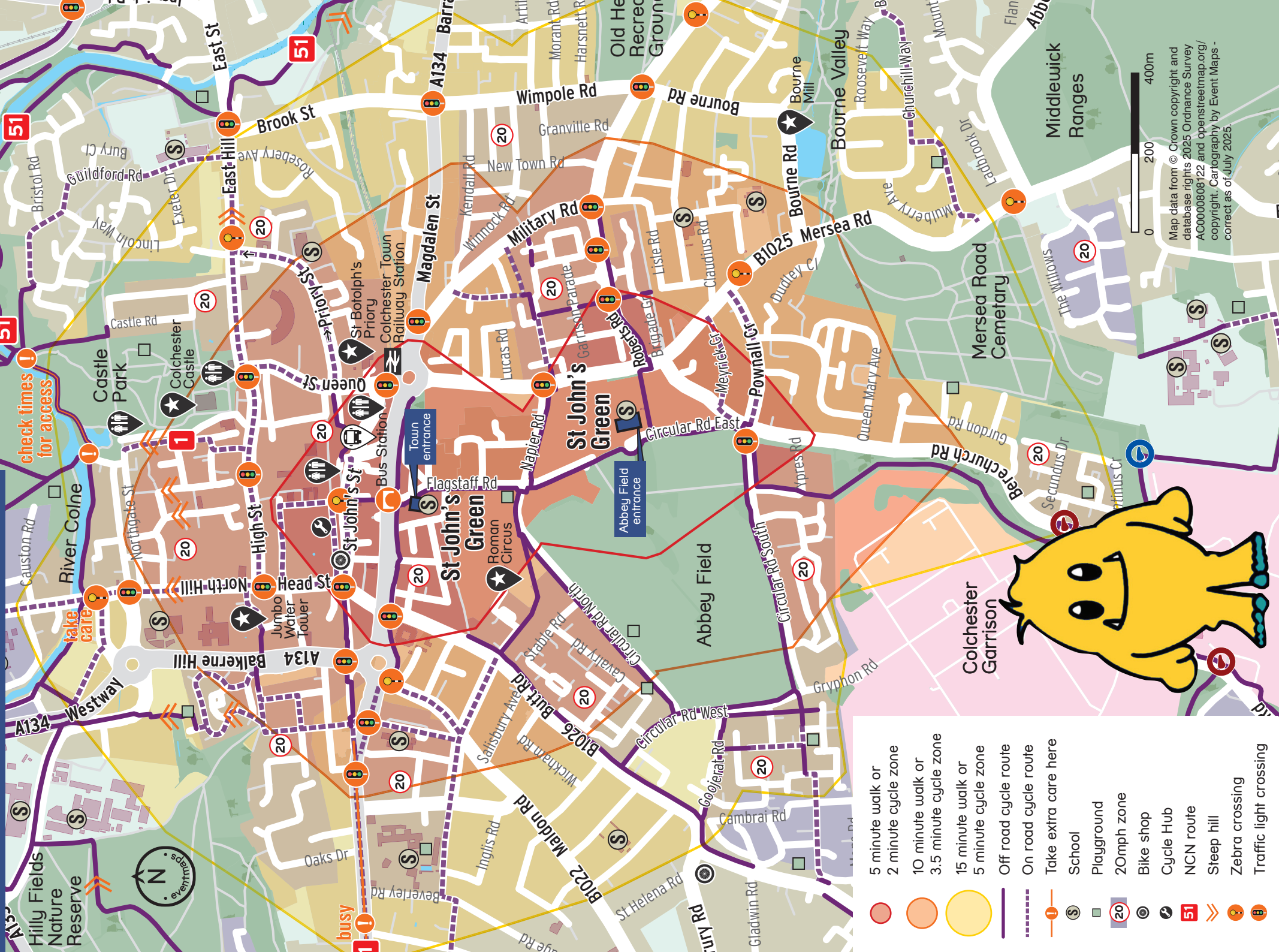


WALK COLCHESTER



cycle  
colchester

# ST JOHN'S GREEN PRIMARY SCHOOL



- 5 minute walk or 2 minute cycle zone
- 10 minute walk or 3.5 minute cycle zone
- 15 minute walk or 5 minute cycle zone
- Off road cycle route
- On road cycle route
- Take extra care here
- School
- Playground
- 20mph zone
- Bike shop
- Cycle Hub
- NCN route
- Steep hill
- Zebra crossing
- Traffic light crossing

Map data from © Crown copyright and database rights 2025 Ordnance Survey  
AC0000808122 and openstreetmap.org/  
copyright. Cartography by Event Maps -  
correct as of July 2025.